



ARC

Electrode Holders **4**

Cable Connectors Misc **5**

Earth Clamps **6**

Magnetic Stands & Holders,
Super Mag **7**

Magnetic Holders and
Sweepers **8**

Magnetic Position Holder &
Super Mag Welders Magnetic
Holders **9**

Magnetic Welding Holder **10**

Welding Cables,
Chipping Hammers **11**

Carbon Arc Gouging Torch
K4000 - Spare Parts **12**

Leads & Lugs **14**

Gouging Carbons,
Engineers Chalk and Holder,
Welding Gauges **15**



EHOP400



EHSS20



EHTT200/400/600



EHTL400/600P

ELECTRODE HOLDERS

Stock Code	Product Description	Pack Size
EHTT200	Electrode Holder Tong type 200 amp, L 205mm x W 30mm kg 0.33	1
EHTT400	Electrode Holder Tong type 400 amp, L 230mm x W 30mm kg 0.43	1
EHTT600	Electrode Holder Tong type 600 amp, L 250mm x W 55mm Kg 0.55	1
EHSS20	Electrode Holder Twist 200 Amp	1
EHTL400P	Electrode Holder Twist 400 Amp	1
EHTL600P	Electrode Holder Twist 600 Amp	1
EHOP400	Electrode Holder Optimus 400 Amp	1
EHOP600	Electrode Holder Optimus 600 Amp	1



CP1025



CP3550



MC300



MC500-F



CP5070



CP7095



MC500



A5025



A2550



PS1025



PS3550



PS5070



PS7095



CS1025



CS3550



CS5070



CS7095

CABLE CONNECTORS

Stock Code	Product Description	Pack Size
MC300	Cable Connector 300 Amp	1
MC500	Cable Connector 500 Amp	1
MC600	Cable Connector 600 Amp Black Handle	1
MC500-F	Cable Connector 500 Amp (Female Only)	1
MC500-M	Cable Connector 500 Amp (Male Only)	1

CABLE PLUGS

Stock Code	Product Description	Pack Size
CP1025	Cable Plug 10-25mm Sq Cable	1
CP3550	Cable Plug 35-50mm Sq Cable	1
CP5070	Cable Plug 50-70mm Sq Cable	1
CP7095	Cable Plug 70-90mm Sq Cable	1

PANEL MOUNT SOCKETS

Stock Code	Product Description	Pack Size
PS1025	Panel Socket 10-25mm Sq Cable	1
PS3550	Panel Socket 35-50mm Sq Cable	1
PS5070	Panel Socket 50-70mm Sq Cable	1
PS7095	Panel Socket 70-90mm Sq Cable	1

CABLE SOCKETS

Stock Code	Product Description	Pack Size
CS1025	Cable Socket 10-25mm Sq Cable	1
CS3550	Cable Socket 35-50mm Sq Cable	1
CS5070	Cable Socket 50-70mm Sq Cable	1
CS7095	Cable Socket 70-90mm Sq Cable	1

DINSE ADAPTOR - REDUCER/ENLARGER

Stock Code	Product Description	Pack Size
A5025	Reducer Large Dinse/Adaptor from (13mm) To Small Dinse (9mm)	1
A2550	Dinse 1025 adaptor to 3550 adaptor from small dinse to large dinse	1



ECG60



ECG80



ECGM20



ECGM40



ECGM60



ECM30R



ECM50R



ECM60R



ECMY60



ECR600



ECSTD60B



ECWG60T



ECR1000-2



EC200P



EC300P



EC500P



EC600HD

EARTH CLAMPS		
Stock Code	Product Description	Pack Size
EC200P	Earth Clamp 200 Amp Copper Braid	1
EC300P	Earth Clamp 300 Amp Copper Braid	1
EC500P	Earth Clamp 500 Amp Copper Braid	1
EC600HD	Earth Clamp 600 Amp Heavy Duty Copper Braid	1
ECGM20	Earth Clamp 150-200 Amp Brass	1
ECGM40	Earth Clamp 400 Amp Brass	1
ECGM60	Earth Clamp 600 Amp Brass	1
ECSTD60B	Earth Clamp 600 Amp Screw Type	1
ECMY60	Earth Clamp 600 Amp Screw Type	1

EARTH CLAMPS		
Stock Code	Product Description	Pack Size
ECG60	Earth Clamp 600 Amp Brass G Type	1
ECG60F	Ferrule for the ECG60	1
ECG80	Earth Clamp 800 Amp	1
ECM30R	Round Magnetic Earth Clamp 300 Amp	1
ECM50R	Round Magnetic Earth Clamp 500 Amp	1
ECM60R	Round Magnetic Earth Clamp 600 Amp	1
ECWG60T	Earth G Clamp 600 Amp with Mech Connector	1
ECR600	Rotary Earth Clamp 600 Amp	1
ECR1000-2	Rotary Earth Clamp 1000 Amp	1



AVA7231

- For 90° clamping of pipes and tubes
- Clamping Capacity 8.8cm.
- Jaw Length 10.10cm



AMM7088

- Strong magnets attract all loose swarf and steel scraps.
- Simply slide center out to release all picked up rubbish.
- 400mm in length.
- Very quick clean up.
- Heavy Duty construction made to last.
- High Quality Super-Mag brand.



MI-TTS-M



MI-MTS-M



EH STAND

The torches and electrode holders are for demonstration only. They are not included in the sale of the Mig Stand, Tig stand or Electrode holder.



OME6961

- Sheet panel clamps Butt Weld - 4 piece.
- Designed to align panel for edge to edge seam Welding.
- Work with flat, concave or convex panels.
- Easily removable or reusable.

MAGNETIC TORCH STANDS

Stock Code	Product Description	Pack Size
MI-TTS-M	TIG Torch Stand Magnetic	1
MI-MTS-M	MIG Torch Stand Magnetic	1
EH Stand	Electrode Holder Torch Stand Magnetic	1

SUPER MAG WELDERS MAGNETIC HOLDERS

Stock Code	Product Description	Pack Size
AMM7088	Magnetic Swarf Collector (On/Off)	1
OME6961	Automotive 4 Piece Butt Weld Clamp set	1
AVA7231	Welders Angle Vice	1



AMM6658

- Strong magnets attract all loose swarf and steel scraps.
- 100cm length but retractable to 70cm length.
- Head of the magnet can be replaced
- Flat packed for easy transport and delivery



AMM6658A

SUPER MAG WELDERS MAGNETIC HOLDERS

Stock Code	Product Description	Pack Size
AMM6658	Round Magnetic Cleaner 1m retractable	1
AMM6658A	Replacement Head	1
OMEMHS101	Magnetic Floor Sweeper	1

OMEMHS101

- 61cm wide magnetic floor sweeper.
- Handle can be retracted and can be flat packed for delivery.
- Floor Sweeper to pick up nails, screws, paper clips and other ferrous metal items.
- Sweeper picks up item into the cavity and then it can be released over a disposal unit.
- Light aluminium housing. Sweeper can be used in machine and fabrication shops, factories and construction sites.



Magnetic Position Holder

Special features include

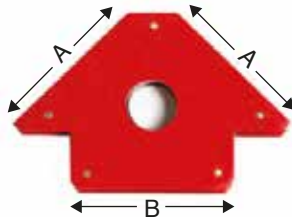
- 3 Models to choose from depending on job weight & size
- Can hold welding jobs (Sheet, Tube or Other) at angles of 45°, 90° or 135° as needed
- Helps like a 3rd hand in positioning and holding jobs on ferrous surfaces.

MAGNETIC POSITION HOLDERS/ WELDERS AID

Stock Code	Product Description	Pack Size
MI-MPH25	Magnetic Welders Position Holder 57x62mm	1
MI-MPH35	Magnetic Welders Position Holder 92x93mm	1
MI-MPH5	Magnetic Welders Position Holder 116x125mm	1



MI-MPH25



MI-MPH35

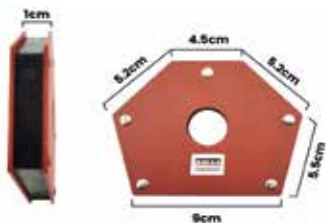


MI-MPH5



AMC1187

Average Pull	Size L x H mm	Description
12.5 kg	100 x 65	Magnetic Clamp, Multiangle



OMEMHS03

Average Pull	Size L x H mm	Description
22 kg	27 x 27 x 35	Multiangle Mag Holder



AMC4968

Average Pull	Size L x H mm	Description
20 kg	155 X 85	Multiangle clamp, double



AMC4972

Average Pull	Size L x H mm	Description
40 kg	85	Welders magnetic ground clamp 800 amp



AMC4986

Average Pull	Nominal Height	Nominal Width	Nominal Thickness	Description
65 kg	110 mm	95 mm	40 mm	Magnetic Square



AMC4987

Average Pull	Nominal Height	Nominal Width	Nominal Thickness	Description
65 kg	200 mm	150 mm	40 mm	Magnetic Square



AMC6967

Average Pull	Size L x H mm	Description
18 kg	85 X 85	Welders magnetic square

- The above enclosed magnet design to prevent chips from entering
- High Power Monster Pull

Magnetic welding holder with on/off switch

Pull force 13.6kg
Size: 137 x 87 x 26mm
Weight: 530gm



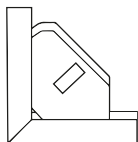
OMEMHS01

Magnetic welding holder with on/off switch

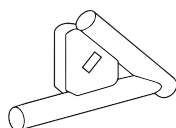
Pull force 24.9kg
Size: 192 x 118 x 33mm
Weight: 1200gm



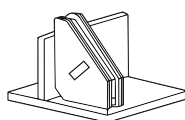
OMEMHS02

Tacking**Flat, Round, Square And Angle**

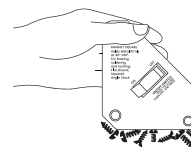
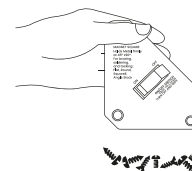
Square Tubing



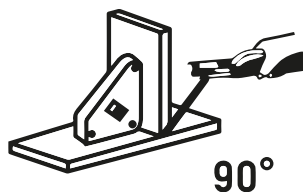
Round Tubing



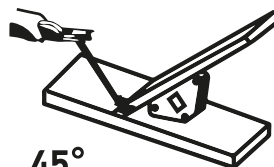
Metal Plates

ON Switch:
Strong Magnetic GripOFF Switch:
No Magnetic Grip

**Holds metal firmly at 45° x 90° x 135° x 180°,
for brazing, soldering**



90°



45°

MAGNETIC WELDING HOLDER

Stock Code	Product Description	Pack Size
OMEMHS01	Magnetic Welding Holder with On/Off Switch. Hold to 13.6kg. Used for angles: 45°, 90°, 135°, 180°. Size 137x87x26mm. Weight 530g	1
OMEMHS02	Magnetic Welding Holder with On/Off Switch. Hold to 24.9kg. Used for angles: 45°, 90°, 135°, 180°. Size 192x118x33mm. Weight 1200g	1

WC16



16mm (up to 200amp)

WC25



25mm (up to 300amp)

WC35



35mm (up to 400amp)

WC50



50mm (up to 500amp)

WC70



70mm (Heavy Duty)

WC95



95mm (Super Heavy Duty)



WELDING CABLE

WELDING CABLE (Price per Metre)

Stock Code	Product Description	Pack Size
WC16	16mm2 Welding Cable Double Insulated Orange 200 Amp	100
WC25	25mm2 Welding Cable Double Insulated Orange 300 Amp	100
WC35	35mm2 Welding Cable Double Insulated Orange 400 Amp	100
WC50	50mm2 Welding Cable Double Insulated Orange 500 Amp	100
WC70	70mm2 Welding Cable Double Insulated Orange	100
WC95	95mm2 Welding Cable Double Insulated Orange	100

***Made to Australian Standards*

CHIPPING HAMMERS

Stock Code	Product Description	Pack Size
CHSH-H	Chipping Hammer (Spring handle) Premium	1
CH-7002	Chipping Hammer Rubber Grip Chrome	1

MIG PLIERS

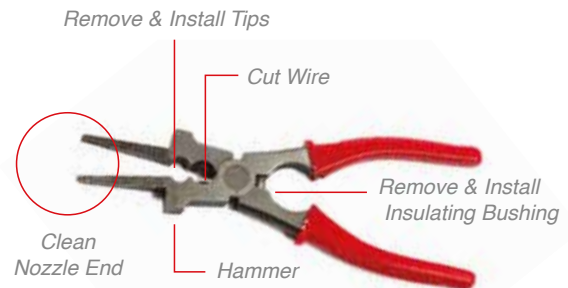
Stock Code	Product Description	Pack Size
BMP275	Multi-Purpose Mig Pliers	1

WIRE BRUSHES

Stock Code	Product Description	Pack Size
WBSS4R	Wire Brush Stainless Steel (316L) 4 Row	10
WBS4R	Wire Brush Carbon Steel 4 Row	10



CH-7002



BMP275



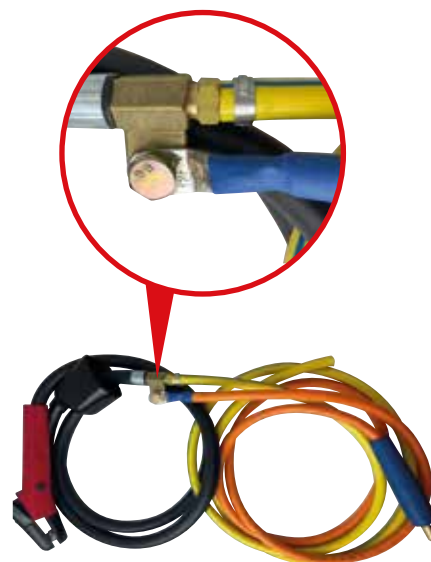
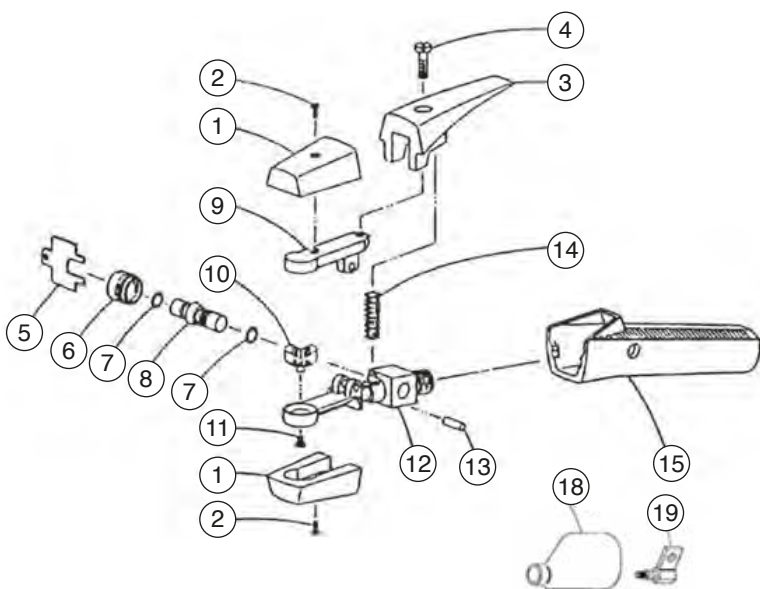
CHSH-H



WBSS4R



K4000



For specialised requirements, K4000 can be adapted with extensions.

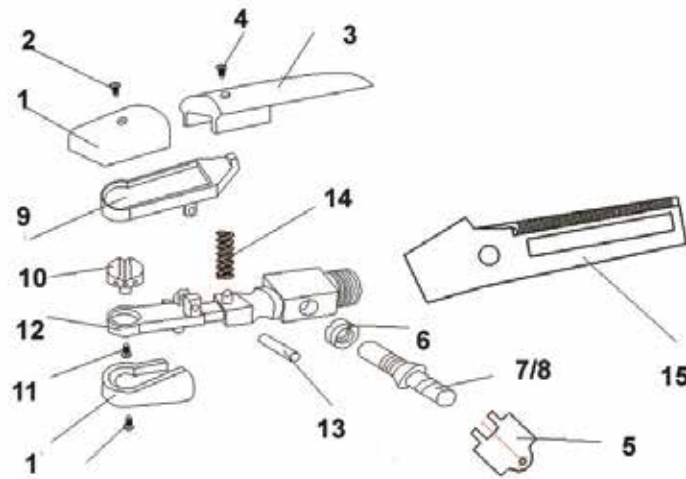
K4000 PARTS

K4000 SPARE PARTS		
Stock Code	Product Description	Pack Size
K4000	Carbon Arc Gouging Torch	1
k4000-1	Up/ Lower Insul Assembly With Screws	1
K4000-2	Insulation Screws	1
K4000-3	Handle Lever	1
K4000-4	Handle Screw	1
K4000-5	Wrench	1
K4000-6	Bonnet	1
K4000-7/8	Air Valve with O Rings	1
K4000-9	Upper Jaw	1

K4000 SPARE PARTS		
Stock Code	Product Description	Pack Size
K4000-10	Injector Nozzle	1
K4000-11	Injector Nozzle Screw	1
K4000-12	Body including lower jaw	1
K4000-13	Hinge Pin	1
K4000-14	Spring	1
K4000-15	Handle	1
K4000-18	Rubber Boot	1
K4000-19	Connector	1



MWK4000



MWK4000 PARTS

MWK4000 SPARE PARTS		
Stock Code	Product Description	Pack Size
MWK4000	Carbon Arc Gouging Torch (1000 Amp) Premium	1
MWK4000-1A	Up/Lower Insul Assembly With Screws	1
MWK4000-2	Screw for Insulator	1
MWK4000-3	Handle Lever	1
MWK4000-4	Lever Screw	1
MWK4000-5	Wrench	1
MWK4000-6	Bonnet	1
MWK4000-7/8	Spool and Spool O Ring set	1
MWK4000-9	Upper Arm	1
MWK4000-10	Head	1
MWK4000-12	Torch Body	1
MWK4000-13	Hinge Pin	1
MWK4000-14	Lever Spring	1
MWK4000-15	Handle	1

WELDING LEAD SETS

Stock Code	Product Description	Pack Size
WLSP200-3	200 Amp Welding Lead Set 16mm ² (Small Dinse) 3 Metre	1
WLSLP200-3	200 Amp Welding Lead Set 16mm ² (Large Dinse) 3 Metre	1
WLSP200-5	200 Amp Welding Lead Set 16mm ² (Small Dinse) 5 Metre	1
WLSLP200-5	200 Amp Welding Lead Set 16mm ² (Large Dinse) 5 Metre	1
WLSP300-3	300 Amp Welding Lead Set 25mm ² (Small Dinse) 3 Metre	1
WLSLP300-3	300 Amp Welding Lead Set 25mm ² (Large Dinse) 3 Metre	1
WLSP300-5	300 Amp Welding Lead Set 25mm ² (Small Dinse) 5 Metre	1
WLSLP300-5	300 Amp Welding Lead Set 25mm ² (Large Dinse) 5 Metre	1

***All Other Lead Sets MADE TO ORDER - POA*

EARTH LEADS

Stock Code	Product Description	Pack Size
ELP200-3	200 Amp Earth Lead 16mm ² (Small Dinse) 3 Metre	1
ELLP200-3	200 Amp Earth Lead 16mm ² (Large Dinse) 3 Metre	1
ELP200-5	200 Amp Earth Lead 16mm ² (Small Dinse) 5 Metre	1
ELLP200-5	200 Amp Earth Lead 16mm ² (Large Dinse) 5 Metre	1
ELP300-3	300 Amp Earth Lead 25mm ² (Small Dinse) 3 Metre	1
ELLP300-3	300 Amp Earth Lead 25mm ² (Large Dinse) 3 Metre	1
ELP300-5	300 Amp Earth Lead 25mm ² (Small Dinse) 5 Metre	1
ELLP300-5	300 Amp Earth Lead 25mm ² (Large Dinse) 5 Metre	1

ELECTRODE LEADS

Stock Code	Product Description	Pack Size
EHP200-3	200 Amp Electrode Lead 16mm ² (Small Dinse) 3 Metre	1
EHLP200-3	200 Amp Electrode Lead 16mm ² (Large Dinse) 3 Metre	1
EHP200-5	200 Amp Electrode Lead 16mm ² (Small Dinse) 5 Metre	1
EHLP200-5	200 Amp Electrode Lead 16mm ² (Large Dinse) 5 Metre	1
EHP300-3	300 Amp Electrode Lead 25mm ² (Small Dinse) 3 Metre	1
EHLP400-3	400 Amp Electrode Lead 35mm ² (Large Dinse) 3 Metre	1
EHP400-5	400 Amp Electrode Lead 35mm ² (Small Dinse) 5 Metre	1



ELECTRODE LEAD



EARTH LEAD



CABLE LUGS

CRIMP (CABLE) LUGS

Stock Code	Product Description	Pack Size
CL1612	Crimp Lug 16mm x 12mm Hole	10
CL2508	Crimp Lug 25mm x 8mm Hole	10
CL2510	Crimp Lug 25mm x 10mm Hole	10
CL2512	Crimp Lug 25mm x 12mm Hole	10
CL3510	Crimp Lug 35mm x 10mm Hole	10
CL3512	Crimp Lug 35mm x 12mm Hole	10
CL5012	Crimp Lug 50mm x 12mm Hole	10
CL7012	Crimp Lug 70mm x 12mm Hole	10
CL9512	Crimp Lug 95mm x 12mm Hole	10
CL12012	Crimp Lug 120mm x 12mm Hole	10



GOUGING CARBONS

GOUGING CARBONS

Stock Code	Product Description	Pack Size
GC5.0	DC Gouging Carbon 5mm	50
GC6.5	DC Gouging Carbon 6.5mm	50
GC8.0	DC Gouging Carbon 8mm	50
GC9.5	DC Gouging Carbon 9.5mm	50
GC130	DC Gouging Carbon 12.5mm	50
GC19J	DC Gouging Carbon 19mm Jointed	50
GCF15	Gouging Carbons Flat 5x15x305mm	50

ENGINEERS CHALK

Stock Code	Product Description	Pack Size
CH075	Engineers Split Chalk 17x10x5mm (100 per box)	Box
CH125	Engineers Split Chalk 127x12.7x5mm (144 per box)	Box
CH127-H	Chalk holder - comes with one piece of chalk	1

WELD FILLET GAUGE

Stock Code	Product Description	Pack Size
MI-WG-8	Weld Fillet Gauge (Cam Type)	1
MI-WG-11	Weld Fillet Gauge	1
MI-HL	Weld Fillet Hi-Lo Gauge	1



CH127-H



CH127-H



CH075



CH125



HI-LO GAUGE

- Internal misalignment after fit up.
- Material thickness after fit up.
- Verify 37/1/2 degree bevel angle.
- Fit-up gap after fit-up.
- Fillet weld leg length.
- Butt weld reinforcement.



MI-WG-8

- Cam Type Weld gauge is used for measuring fillet leg length and weld throat size.
- The Weld Gauge is designed to measure undercut and pitting depth and excess weld metal.
- The Weld Gauge is offered in a cam type construction and finds application in the welding industry. Cam Type Weld Gauge that comes under MI-WG-8 model can also measure roof and face gap, angle of preparation and misalignment.



MI-WG-11

The fillet Weld gauge allows fast, accurate measurement of eleven (11) fillet weld sizes: 1/8", 3/16", 1/4", 5/16", 7/16", 1/2", 5/8", 3/4", 7/7" and 1", and their metric equivalents, to determine weld sizes either concave or convex.